



Fine Audio Instruments



NEMO

Unpacking the NEMO

Immediately upon receipt of the NEMO, inspect the carton for possible damage during shipment.

The carton and packaging have been designed to provide the safest possible protection for transport of your amplifier.

Unpack the unit carefully. Save all packaging materials for future shipment.

The contents of the carton

1 pcs Electrocompaniet NEMO (amplifier)

1 pcs AC mains cord.

1 pcs spare Mains Fuse (located in the fuse drawer)

1 pcs inspection card.

Set up procedure

Before connecting the NEMO to the mains, check that the main voltage indicated on the rear panel corresponds to the line voltage in the territory where you intend to use the unit.

How to avoid damages

Do not under any circumstances connect or disconnect equipment when power is turned on.

The design of the RCA plug generates a huge transient when inserted.

Connecting or disconnecting equipment with the power on can result in severe damage to both speakers and amplifier.

How to avoid noise problems

The NEMO contains delicate circuits that are sensitive to magnetic strayfields.

The unit should not be placed near main transformers, TV sets, etc. Care should also be taken regarding placement of the interconnect cables. Do not run interconnect cables in parallel with main cords or speaker cables. Keep interconnect cables as short as possible.

How to avoid possible antenna problems

In some set-ups hum may occur when you connect the radio, VCR or TV to your system.

The problem is caused by DC voltage coming from your antenna.

Please contact your cable network operator.

How to connect your system

Please read this page carefully and follow diagram 1.

Inputs

Balanced operation only.

Outputs

SPEAKER OUTPUT:

Never short the positive or the negative output to ground or chassis.
Switch the amplifier off when connecting the speakers.

How to power up your system

You should always power up your system in the following way:
Signal sources (CD player, tuner, etc.) first, then preamplifier.
Allow a 30 seconds warm-up before you turn on the NEMO.

When switching off your system

Start with the NEMO, then the preamplifier and at last the signal sources.

The main switch is located in the center of the lower part of the rear.

If the NEMO has been switched off, allow two hours of warm-up for optimal sonic performance.

When the NEMO is not to be used for a long period of time, use the main switch to turn the unit off.

Then disconnect the AC main cord for maximum safety.

Front panel

Diagram 2

In center of the front panel the logo will be lit when power is on.

Replacing a blown mains fuse

Diagram 3

The mains fuse is located in a small drawer inside the AC inlet of the unit.

If, for some reason, the fuse is blown, turn the unit off and remove the AC cord from the AC inlet.

Open the drawer with a small screwdriver and remove the blown fuse.

The spare fuse is located inside a holder beside the main fuse.

1. Remove the spare fuse gently by drawing it out of its holder.
2. Insert the spare fuse as the active fuse.
3. Push the drawer gently back to closed position.
4. Re-insert the AC cord and turn the unit on.

Never replace the fuse with other values than indicated on the unit!

Input configurations

Diagram 4

XLR input: 1 = ground 2 = positive 3 = negative

Output configurations

Diagram 4

Speaker: Red = positive Black or White = negative

Please notice:

Both outputs are hot.

Do not under any circumstances short these to ground or chassis.

Technical specifications NEMO:

The following technical data were measured on randomized test objects and are typical data.

All measurements are made at 120V / 240V // 50Hz / 60Hz

Clipping point of the amplifier is set to a level where total harmonic distortion (THD) is 0.2 %.

Measurements	Parameters	Balanced
Input impedance	(Fixed)	55 Kohm
Input level for rated output	(RMS)	1 V
Frequency response	(DC - 65 KHz)	-0.4 dB
Noise note1	(400 - 30 KHz)	< 150 uV
	(DC – 30 KHz)	< 200 uV
Output Impedance	(20 Hz - 20 KHz)	< 0,009 ohm
Damping factor	(20 Hz – 20 KHz)	> 900 X
Maximum peak current		> 150 A
THD	(1 KHz, half power, 8 ohm)	< 0,001 %
THD	(1 KHz, -1 dB, 8 ohm)	< 0,0015 %

Note1: Noise is measured with input shorted.

Rated output power

10 % change in line voltage will give approximately 20 % change in output power.

8 ohm	-	600 W
4 ohm	-	1200 W

Power consumption 230 W no load or signal

The NEMO is **DC** coupled from input to output.

Dimensions

Width:	514 mm	-	20.2 “
Depth:	470 mm	-	18.5 ”
Height:	288 mm	-	11.3 ”
Weight:	41 Kg	-	90.2 lbs.

Specifications subject to change without notice.

Important Notice

For optimal sonic performance, the NEMO should be burned in for a minimum time of 72 hours.

The easiest way to burn in your NEMO is to put a signal at the input, without the speakers connected

If the NEMO has been switched off, allow two hours of warm-up to optimal sonic performance.

Due to high class A operation in all Electrocompaniet designs, it is normal for the NEMO to feel warm.

Proper ventilation is important.

Never cover the ventilation area.

A good rule of thumb is to allow at least 3 - 5 cm (1 - 2 inches) of air sidewise, and 5 - 8 cm (2 - 3 inches) above the NEMO

If service is needed

Your dealer will have all relevant information regarding the service station in your area, and will ensure that your unit is serviced with minimum delay.

It is our general policy to have your unit returned to you within five working days.

This is an average time, and can vary locally, depending on the workload at that particular service station.

If, for some reason, there are no service facilities available in your country, please ship the unit to the following address:

ELECTROCOMPANIET AS,
SOLHEIMVEIEN 36,
BOX 92, N-1473 SKÅRER (SKAARER),
NORWAY

Switchboard: +47 67911750 Fax: +47 67911760 Service: +47 67911766

E-mail: elcomp@electrocompaniet.no

Web: www.electrocompaniet.no

Service department: jon@electrocompaniet.no

The end-user is responsible for all-shipping charges, insurance, re-importation and duty charges.

When shipping a product to the factory for service, always include the following:

1. A sales slip or other proof of purchase if repair is claimed under warranty.
2. A proforma invoice with value of goods, stating that the amplifier is returned to Norway for repair.
3. An accompanying letter describing faults, symptoms, or problems with the unit.
4. Always ship the unit in its original carton and packaging material to prevent damage in transit. Electrocompaniet will not cover damages incurred in transit.

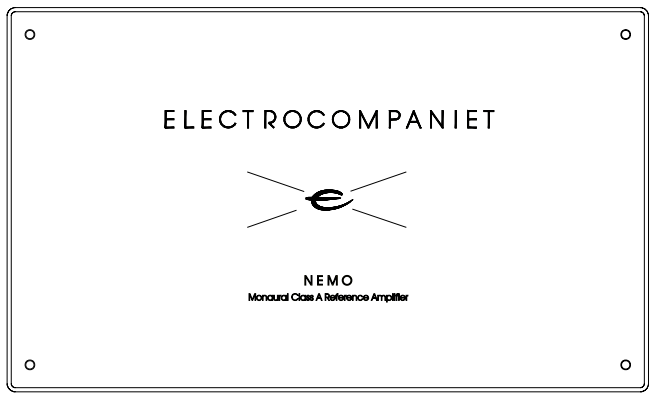


Diagram2

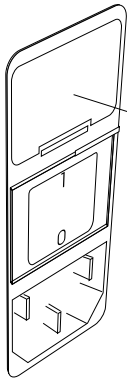
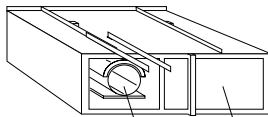


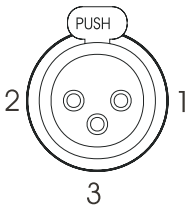
Diagram3



ACTIVE FUSE

SPARE FUSE

Diagram4



XLR INPUT

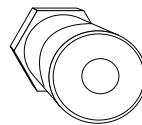
1 = Gnd

2 = +

3 = -



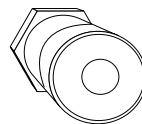
RED



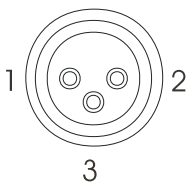
WHITE



RED



WHITE



XLR OUTPUT (LINK)

Diagram 1

